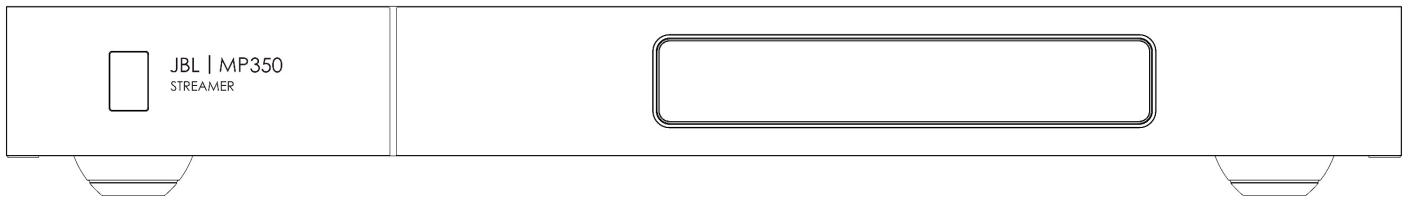




# MP350 Classic - Digital Media Player

## Owner's Manual



## Download the setup app:



# IMPORTANT SAFETY INSTRUCTIONS

1. Read these instructions.
2. Keep these instructions.
3. Heed all warnings.
4. Follow all instructions.
5. Clean only with a dry cloth.
6. Do not block any ventilation openings. Install this apparatus in accordance with the manufacturer's instructions.
7. Do not install this apparatus near any heat sources such as radiators, heat registers, stoves or other apparatus that produce heat.
8. Do not defeat the safety purpose of the polarized or grounding-type plug. A polarized plug has two blades with one wider than the other. A grounding-type plug has two blades and a third grounding prong. The wide blade or the third prong is provided for your safety. If the provided plug does not fit into your outlet, consult an electrician for replacement of the obsolete outlet.
9. Protect the power cord from being walked on or pinched, particularly at plugs, convenience receptacles and the point where they exit from the apparatus.
10. Use only attachments/accessories specified by the manufacturer.



11. Use only with the cart, stand, tripod, bracket, or table specified by the manufacturer or sold with the apparatus. When a cart is used, use caution when moving the cart/apparatus combination to avoid injury from tip-over.
12. Unplug this apparatus during lightning storms or when unused for long periods of time.
13. Refer all servicing to qualified service personnel. Servicing is required when the apparatus has been damaged in any way, such as when the power-supply cord or plug is damaged, liquid has been spilled or objects have fallen into the apparatus, or the apparatus has been exposed to rain or moisture, does not operate normally or has been dropped.
14. To disconnect this apparatus from the AC mains completely, disconnect the power-supply cord plug from the AC receptacle.
15. The mains plug of the power-supply cord shall remain readily operable.
16. This apparatus is intended to be used only with the power supply and/or charging cable provided by the manufacturer.

The following instructions may not apply to waterproof devices. Refer to your device user manual or quick start guide for more waterproof instruction if any.

- Do not use this apparatus near water.
- Do not expose this apparatus to dripping or splashing, and ensure that no objects filled with liquids, such as vases, are placed on the apparatus.

**WARNING: TO REDUCE THE RISK OF FIRE OR ELECTRIC SHOCK, DO NOT EXPOSE THIS APPARATUS TO RAIN OR MOISTURE.**

CAUTION	
RISK OF ELECTRIC SHOCK. DO NOT OPEN.	
	THIS SYMBOL ON THE PRODUCT MEANS THERE IS UNINSULATED, DANGEROUS VOLTAGE WITHIN THE PRODUCT ENCLOSURE THAT MAY PRESENT A RISK OF ELECTRICAL SHOCK.
	THIS SYMBOL ON THE PRODUCT MEANS THERE ARE IMPORTANT OPERATING AND MAINTENANCE INSTRUCTIONS IN THIS GUIDE.

Visit the product page at [JBL.com](http://JBL.com) and download the Safety Sheet for a full list of safety instructions.

## Class II Product

This equipment is a Class II or double insulated electrical appliance. It has been designed in such a way that it does not require a safety connection to electrical earth ("ground" in the U.S.).

# Table of Contents

<b>IMPORTANT SAFETY INSTRUCTIONS</b> .....	<b>2</b>
Class II Product .....	2
<b>Table of Contents</b> .....	<b>3</b>
<b>Package Contents</b> .....	<b>4</b>
<b>Placing The Unit</b> .....	<b>4</b>
<b>Front Panel</b> .....	<b>5</b>
<b>Rear Panel</b> .....	<b>5</b>
<b>Remote Control</b> .....	<b>6</b>
<b>Connecting the Streamer</b> .....	<b>7</b>
Network Connection .....	7
Wired Connections: .....	7
Wi-Fi Connections: .....	7
Analog Audio Connection .....	8
Digital Audio Connection .....	9
<b>Operation</b> .....	<b>10</b>
Power .....	10
Auto Standby .....	10
Playback .....	10
<b>USB</b> .....	<b>10</b>
<b>Menu</b> .....	<b>11</b>
Menu Tree .....	11
<b>Supported File Formats</b> .....	<b>11</b>
<b>Troubleshooting</b> .....	<b>12</b>
<b>Specifications</b> .....	<b>12</b>
<b>Trademarks and Licenses</b> .....	<b>13</b>

## Thank you for choosing JBL

For over 75 years, JBL has been creating best in class audio equipment for concerts, studios, theaters, and homes around the world. JBL is the trusted choice of leading recording artists and sound engineers.

The JBL MP350 is designed to provide you with upgradable audio streaming for decades to come, all with exceptional musicality so you get the most enjoyment from your music.

This handbook is a guide to installing and using the MP350 and includes information on its more advanced features.

In the unlikely event of any fault, or you require technical assistance, please contact our dedicated support teams by email using [luxurysupport@harman.com](mailto:luxurysupport@harman.com), or by telephone using +44 (0) 1707 668012 or +1 888 691 4171. Or, if you simply require further information about JBL products, our network of dealers will be happy to help you. Further information can also be found on the JBL website at [JBL.com](http://JBL.com).

## Package Contents

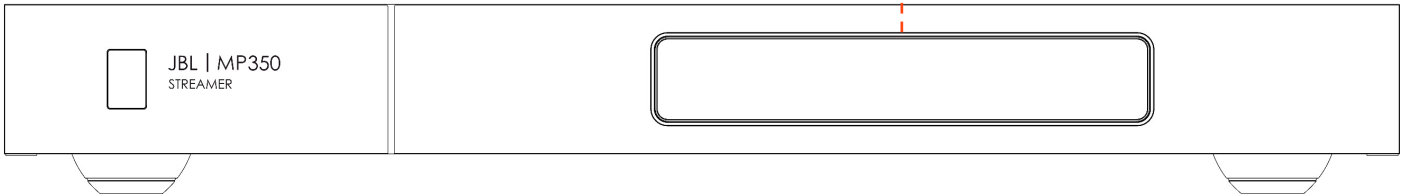
- JBL MP350 Classic streaming music player
- IR remote
- 2x AAA batteries for the remote control
- Region specific power cords
- Quick start guide
- Safety and compliance document

## Placing The Unit

- Place the streamer on a level, firm surface, avoiding direct sunlight and sources of heat or damp.
- Do not place the MP350 on top of an amplifier or other source of heat.
- Make sure the remote-control receiver to the left of the front panel display is unobstructed, otherwise this will impair the use of the remote-control.
- Do not place your record deck on top of this unit. Record decks are very sensitive to the noise generated by mains power supplies which will be heard as a background 'hum' if the record deck is too close.
- The normal function of the unit may be disturbed by strong electromagnetic interference. If this occurs, simply reset the unit with the switch on the rear panel, or move the unit to another location.

# Front Panel

Display



# Rear Panel

## Ethernet Socket

Connect this to your home network when not using Wi-Fi

## Digital Outputs

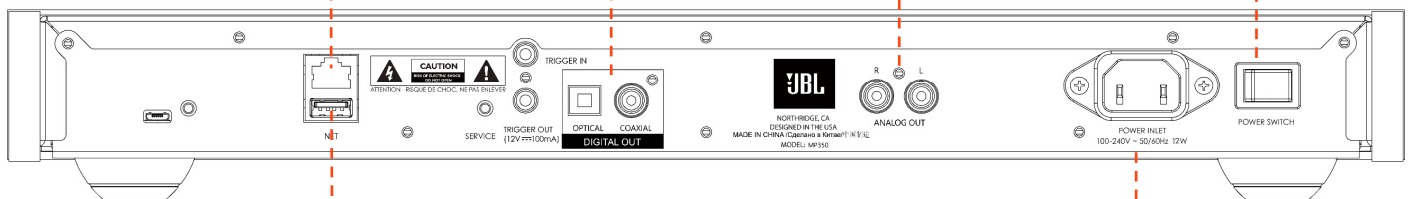
Connect either of these outputs to a digital input on your DAC or amplifier

## Analog Outputs

Connect these outputs to an analog input on your amplifier

## Power Switch

Switch on or off



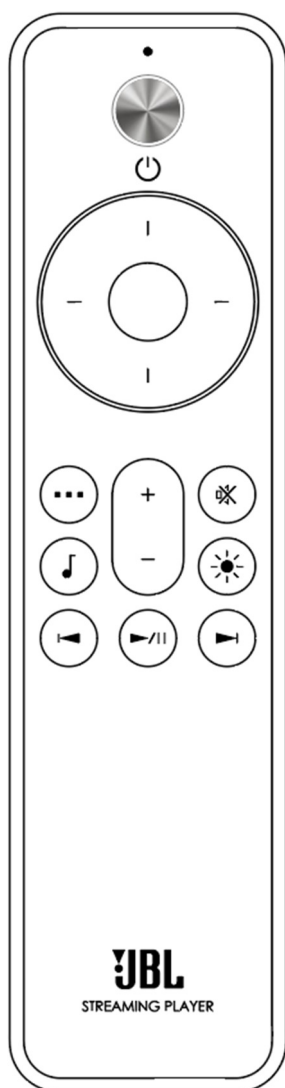
## USB Socket

Connect USB stick for playback of music files

## Power Input

Connect the supplied power cable here

# Remote Control



	Toggle Standby Operation
	Menu Navigation Center button to select
	Volume Control (for MP350 or SA550)
	Mute On or Off (for MP350 or SA550)
	Display Brightness
	Transport Keys (Play/Pause, Skip back/forward)
	Menu button
	Music info button

Note: Incorrect use of batteries can have hazardous results. Do not mix old and new batteries together. Do not use non-identical batteries together. Although they may look similar, different batteries may have different voltages. Ensure the batteries are inserted in the correct direction.

Remove batteries from equipment that is not going to be used for a month or more. When disposing of used batteries, please comply with governmental or local regulations that apply in your country or area.

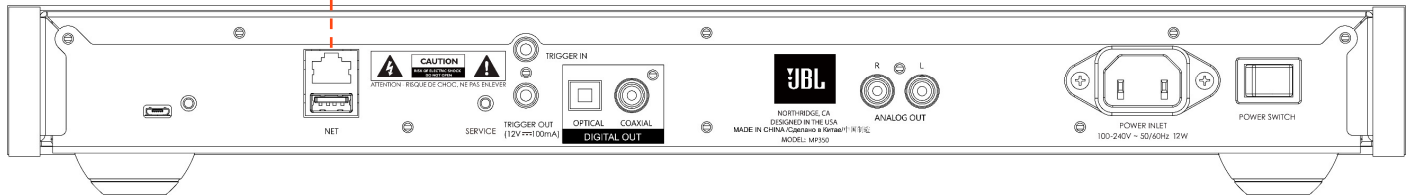
# Connecting the Streamer

## Network Connection

### Wired Connections:

#### Ethernet Socket

Connect this to your home network using a Cat 5e or Cat 6 cable

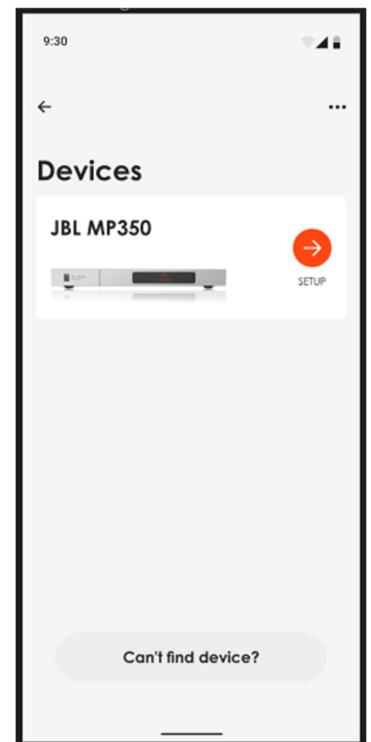


### Wi-Fi Connections:

To make a Wi-Fi connection, download the **JBL Premium Audio** app to your smartphone or tablet. Links are on the front page of this manual.

Power on the JBL MP350 streamer and open the app to discover it after the MP350 is **Ready**. Select it and follow the prompts to connect it to your Wi-Fi network.

Alternatively, you can connect the JBL MP350 to your Wi-Fi network using **Apple Airplay speaker setup** in the Wi-Fi settings of your Apple device, or the **Google Home app** in both Android and Apple devices.

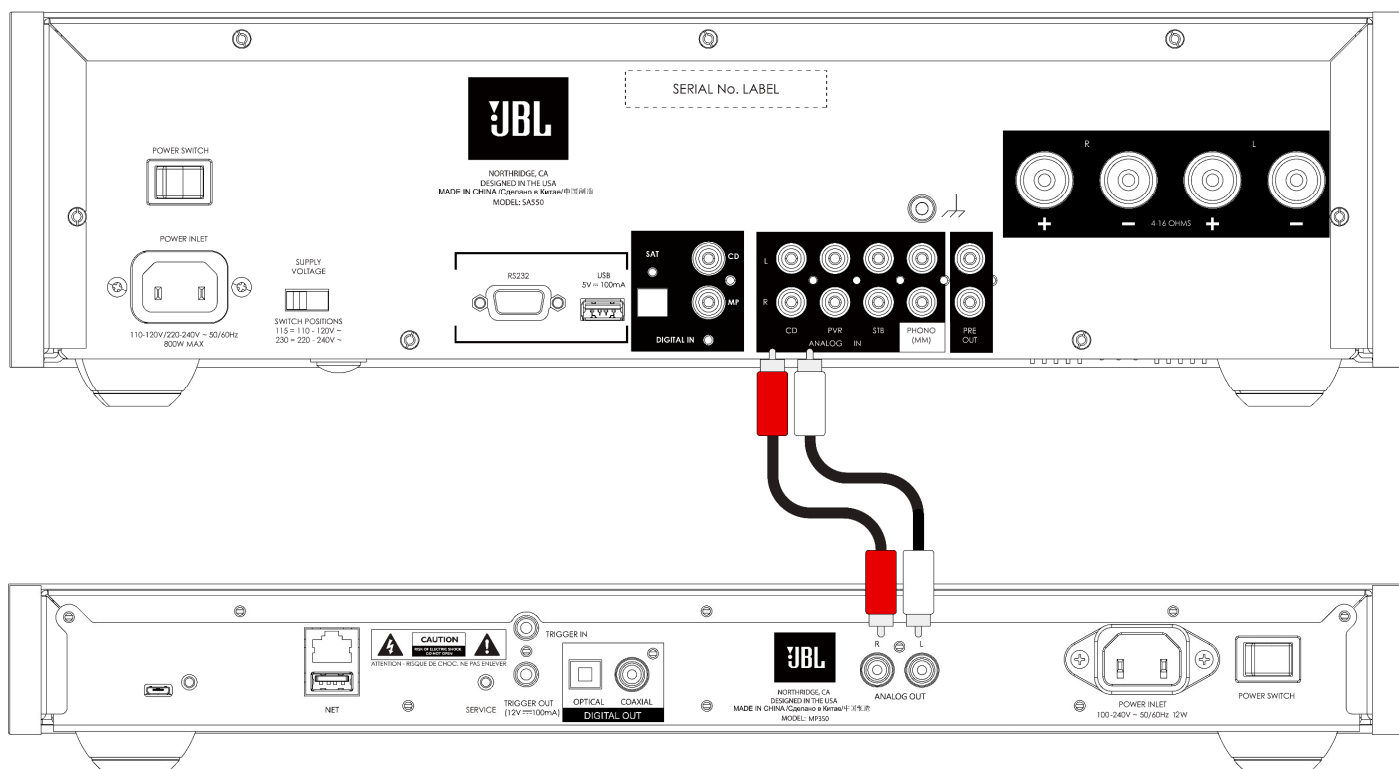


## Analog Audio Connection

Step 1, ensure power is disconnected from the Streamer and Amplifier.

Step 2, using analog interconnect cables, connect the right (R), red terminal of the analog output on the streamer to the right (R), usually red terminal of an analog input on your amplifier.

Step 3, connect the left (L), white terminal of the analog output on the streamer to the left (L), usually white terminal of an analog input on your amplifier.



## Top Tips

- After making connections: switch the amplifier on with no input and reduce the volume to minimum. Select the input that corresponds to your connection, and then slowly increase the volume to a suitable listening level to avoid loud sounds or product damage in the event of incorrect connection.
- If you are unsure as to how your system should be connected, please contact your JBL dealer who will be happy to help you.



## Digital Audio Connection

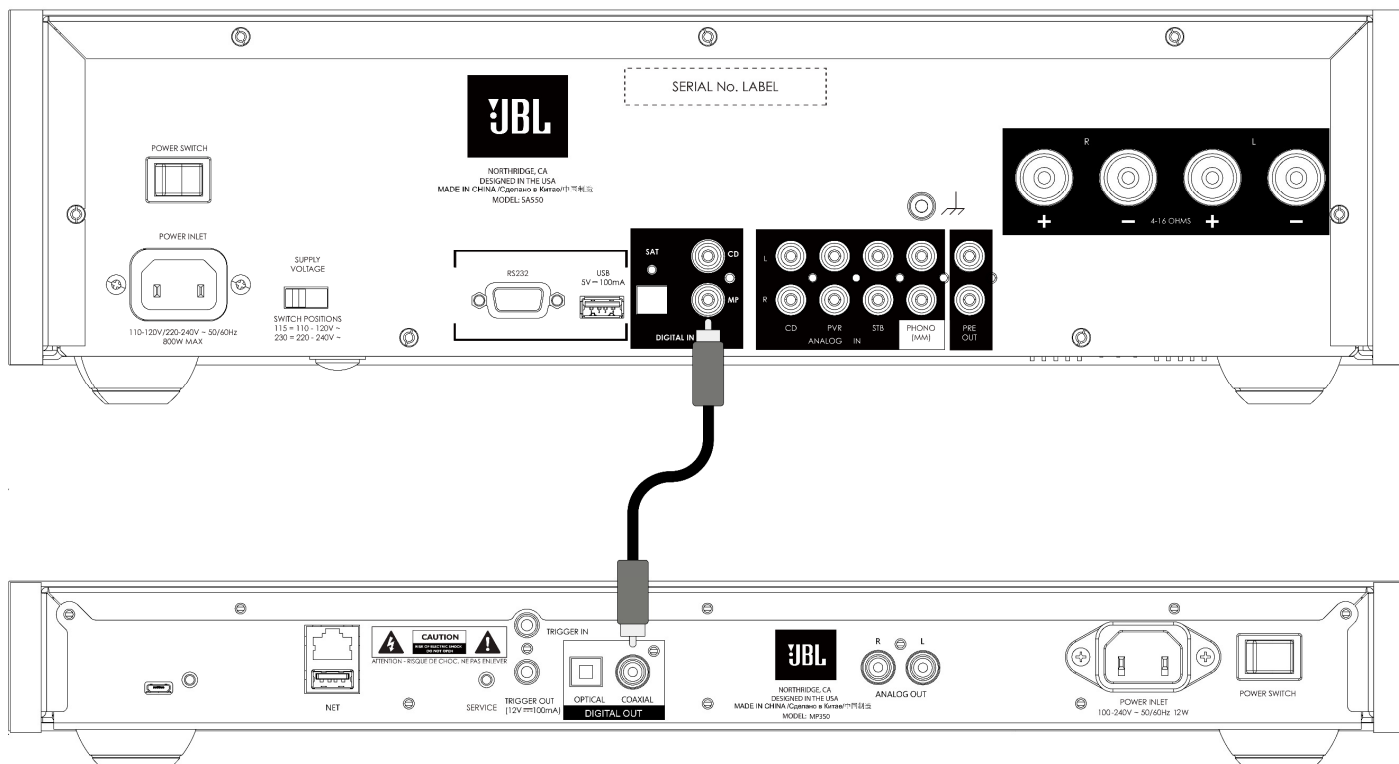
Step 1, ensure power is disconnected from the streamer and amplifier.

Step 2, using a digital coax interconnect cable, connect the digital coaxial output on the streamer to a digital coaxial input on your amplifier.

Alternatively, using an optical Toslink interconnect cable, connect the digital optical output to a digital optical input on your amplifier.

Note 1: Digital outputs are disabled by default. To use a Digital output, change the **Output Type** in the settings menu. To use the menu, see Page 11

Note 2: Variable output is not available when Digital output is enabled. When Digital output is selected, **Output Volume** will default to **Fixed**.



## Top Tips

- Digital audio connections are recommended when using the MP350 with the JBL SA550 amplifier.
- After making connections: switch the amplifier on with no input and reduce the volume to minimum. Select the input that corresponds to your connection, and then slowly increase the volume to a suitable listening level to avoid loud sounds or product damage in the event of incorrect connection.
- If you are unsure as to how your system should be connected, please contact your JBL dealer who will be happy to help you.

## Operation

### Power

The power switch on the rear panel switches the amplifier on or off. When you have finished making connections, switch the amplifier on.

### Auto Standby

The MP350 is designed to enter standby automatically after 20 minutes with no audio playing, and no user interaction. This is to meet international power consumption regulations. This can be turned off in the menu. To use the menu, see page 11.

### Playback

The JBL MP350 can be connected to, and play music from the following apps and services:

- Spotify Connect
- Tidal Connect
- Apple Airplay 2
- Chromecast (requires acceptance of Google terms in the JBL Premium App or additional setup steps in the Google Home app)
- Roon (requires additional setup in Roon app)

From the JBL Premium Audio app, you can access setup favorites and access other services including but not limited to:

- Internet Radio
- Podcasts
- Connected USB media
- Local network storage (UPnP)

## USB

Insert the USB storage device into the USB socket on the rear panel. Do not use a USB extension cable.

The JBL MP350 can play music files stored on a USB flash drive. Music files contained within the USB storage can be browsed using the **JBL Premium Audio app**.

Please refer to **Supported File Formats** on page 11.

## Menu

To access the setting menu, press the MENU button  on the remote control.

To navigate the menu use the navigation buttons on the remote control.


### Menu Tree

Output Type	Selects which output to use, Analog or Digital with full or partial MQA decoding (where MQA encoded content is being played). Default is <b>Analog</b> .
Output Volume	Selects whether the audio output volume is fixed or variable. Default is <b>Variable</b> .
Display	Select Display Brightness. Default is <b>Full</b> .
Auto Standby	When enabled, the streamer will enter standby after 20 minutes with no user interaction or playback. Default is <b>On</b> .
DAC Filter	Select a digital filter for the analog outputs. Default is <b>Slow</b> .
System Reset	Press Select/OK to initiate a reset of all settings to default.
USB Update	Press Select/OK to initiate a software update from a USB stick present in the USB socket on the rear panel.
NET Version	Displays the current software version in operation on the NETWORK device.
Host Version	Displays the current software version in operation on the HOST device.
IP Address	Displays the current IP address of the MP350 on your network.
MAC Address	Displays the MAC address of the MP350.
UNIT ID	Displays the NETWORK ID of the MP350 as identified to other devices on the network.

## Supported File Formats

File Type	Bit Depths	Sample Rates
AAC	16 or 24 bit	44.1, 48, 88.2 or 96 kHz
AIFF	16 or 24 bit	44.1, 48, 88.2, 96, 176.4 or 192 kHz
ALAC	16 or 24 bit	44.1, 48, 88.2, 96, 176.4 or 192 kHz
FLAC	16 or 24 bit	44.1, 48, 88.2, 96, 176.4 or 192 kHz
MP3	16 bit	44.1 or 48 kHz
OGG	16 bit	44.1 or 48 kHz
WAV	16 or 24 bit	44.1, 48, 88.2, 96, 176.4 or 192 kHz
WMA	16 bit	44.1 or 48 kHz

# Troubleshooting

Problem	Check the following
No sound	<p>Is the streamer correctly plugged in and switched on?</p> <p>Is the streamer correctly connected to the amplifier, with the correct input selected?</p> <p>Is the amplifier muted?</p> <p>Is the correct output mode selected (Analog or Digital)? (See menu on page 11)</p>
The streamer does not respond to the remote control	<p>Are there fresh batteries in the remote control?</p> <p>Are you pointing the remote control towards the amplifier window without obstruction?</p>
The front panel display is blank	<p>Is the streamer correctly plugged in and switched on?</p> <p>Is the streamer in standby?</p> <p>Is the display dimmed to "Off"?</p> <p>Press the  button on the remote control.</p>
Cannot control the volume	<p>Is Fixed volume enabled? (See menu on page 11)</p> <p>Is Digital output selected? (See menu on page 11)</p>
Cannot discover the streamer in an app	<p>Is the streamer correctly plugged in and switched on?</p> <p>Does the streamer have a network connection, wired by Ethernet or Wi-Fi?</p> <p>For Wi-Fi connections, has setup been completed using the JBL Premium Audio app?</p> <p>Is your smartphone or tablet connected to the same local network?</p>

# Specifications

<b>Interfaces</b>	
USB	USB 2.0 High Speed (480Mbps)
Ethernet	10/100Mbps
Wi-Fi	802.11b/g/n
<b>Analog Outputs</b>	
Digital to Analog Converter	TI PCM1796
Signal/Noise Ratio (AwtD)	115dB
Harmonic Distortion (1kHz)	< 0.007%
Frequency response	10 Hz – 20 kHz ± 0.5dB
Output level (fixed)	2.2V rms
Output Impedance	47Ω unbalanced
Jitter RMS	< 20 psec
<b>General</b>	
Mains voltage	110–240V, 50–60Hz
Maximum power consumption	12W
Dimensions in mm (including feet, control knob and connectors)	448 W x 58 H x 285 D
Weight (net)	4.5kg
Weight (gross)	7.0kg

## Trademarks and Licenses



Apple®, AirPlay® and the AirPlay Logo™, iPod®, iPhone® and iPad® are trademarks of Apple Inc., registered in the U.S. and other countries. App Store is a service mark of Apple Inc.

To use AirPlay with the JBL MP350, the latest version of iOS, iPadOS, or macOS is recommended.



The Spotify software is subject to third party licenses that can be found here:

<https://developer.spotify.com/legal/third-party-licenses/>



The Wi-Fi CERTIFIED™ logo is a registered trademark of Wi-Fi Alliance®.



Google, Google Play, Chromecast, and other related marks are trademarks of Google LLC. The Google Assistant requires an internet connection and is not available in certain countries and languages. Availability and react of certain features and services are device, service, and network-dependent and may not be available in all areas. Controlling certain devices in your home requires compatible smart devices. Subscriptions for services and applications may be required and additional terms, conditions and/or charges may apply.

MQA and the Sound Wave Device are registered trademarks of MQA Limited. © 2016

MQA (Master Quality Authenticated).

MQA is an award-winning British technology that delivers the sound of the original master recording. The master MQA file is fully authenticated and is small enough to stream or download.

Visit [mqa.co.uk](http://mqa.co.uk) for more information.



The JBL MP350 includes MQA technology, which enables you to play back MQA audio files and streams, delivering the sound of the original master recording.

MQA or MQA Studio indicates that the product is decoding and playing an MQA stream or file and denotes provenance to ensure that the sound is identical to that of the source material.

MQA Studio indicates it is playing an MQA Studio file, which has either been approved in the studio by the artist/producer or has been verified by the copyright owner.

### MP3

MPEG Layer-3 audio decoding technology licensed from Fraunhofer IIS and Thomson multimedia.

FLAC Decoder Copyright © 2000, 2001, 2002, 2003, 2004, 2005, 2006, 2007, 2008 Josh Coalson

Redistribution and use in source and binary forms, with or without modification, are permitted provided that the following conditions are met:

- Redistributions of source code must retain the above copyright notice, this list of conditions and the following disclaimer.
- Redistributions in binary form must reproduce the above copyright notice, this list of conditions and the following disclaimer in the documentation and/or other materials provided with the distribution.
- Neither the name of the Xiph.org Foundation nor the names of its contributors may be used to endorse or promote products derived from this software without specific prior written permission.

### FLAC

THIS SOFTWARE IS PROVIDED BY THE COPYRIGHT HOLDERS AND CONTRIBUTORS 'AS IS' AND ANY EXPRESS OR IMPLIED WARRANTIES, INCLUDING, BUT NOT LIMITED TO, THE IMPLIED WARRANTIES OF MERCHANTABILITY AND FITNESS FOR A PARTICULAR PURPOSE ARE DISCLAIMED. IN NO EVENT SHALL THE FOUNDATION OR CONTRIBUTORS BE LIABLE FOR ANY DIRECT, INDIRECT, INCIDENTAL, SPECIAL, EXEMPLARY, OR CONSEQUENTIAL DAMAGES (INCLUDING, BUT NOT LIMITED TO, PROCUREMENT OF SUBSTITUTE GOODS OR SERVICES; LOSS OF USE, DATA, OR PROFITS; OR BUSINESS INTERRUPTION) HOWEVER CAUSED AND ON ANY THEORY OF LIABILITY, WHETHER IN CONTRACT, STRICT LIABILITY, OR TORT (INCLUDING NEGLIGENCE OR OTHERWISE) ARISING IN ANY WAY OUT OF THE USE OF THIS SOFTWARE, EVEN IF ADVISED OF THE POSSIBILITY OF SUCH DAMAGE.



HARMAN International, Incorporated

8500 Balboa Boulevard, Northridge, CA 91329 USA

Danzigerkade 16G 1013 AP Amsterdam, Netherlands

Ground Floor, Westside 2, London Road, Apsley, Hemel Hempstead,  
Hertfordshire, HP3 9TD, United Kingdom

[www.jbl.com](http://www.jbl.com)

© 2023 HARMAN International Industries, Incorporated. All rights reserved.

JBL is a trademarks of HARMAN International Industries, Incorporated,  
registered in the United States and/or other countries.

Features, specifications, and appearance are subject to change without notice.